

Pathways & Accessories



The EZ-Path System

EZ-Path Cable Pathways are designed to facilitate the installation of cables through fire-rated walls and floors. These products are a perfect choice for new cable installations but also split apart to allow use with previously installed cables. A wide variety of accessories are presented here that make the installation of these products a quick and easy task. These products provide a mechanical approach to cable firestopping, eliminating for the most part, the use of sealants, putties, or other products that must be removed or replaced when adding or removing cables. These are the "canned solutions". Customers have also creatively utilized strut, conduit clamps, and a variety of other methods to adapt this very versatile product to their own particular needs.

Please consult the Product Data Sheets and Installation Instructions for additional information regarding the use of these products.

EZ-Path Series 22 Pathway

EZ Moves, Adds, and Changes for Smaller Cable Runs

The Series 22 Pathway is designed for new or existing cable installations through walls up to 9" (22.9 cm) thickness. Pathway holds up to 24 CAT 5E cables. Pathway can be mounted as a single unit in either a 2" (51mm) round or a 1.5" (38 mm) x 1.5" (38 mm) square opening.

Designed for wall applications, the Series 22 Pathway is sold as a complete kit including wall plates, gaskets, labels, required set screws and allen key.

No additional accessories are required!

Part#	Description
EZD22	One (1) EZ-Path Mini - complete kit



EZ-Path Series 33 Pathway

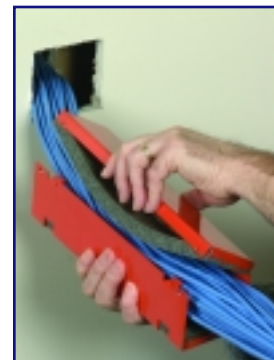
A Larger Modular System for Expanded Cabling Systems

Series 33 Pathway is designed for new or existing cable installations through walls up to 9" (22.9 cm) thick or floors. Single pathway holds up to 120 CAT 5E cables. Pathways can be ganged for additional capacity.

A wide variety of accessories adapt Series 33 Pathways to a broad range of applications. Unless indicated, pathway kits include everything necessary for the installation. Pathways may be purchased in bulk and used with available accessory mounting plate kits.

When purchased separately, pathways include primary wall labels. Accessory plate kits provide plates, gaskets, secondary wall labels (if any), set screws, and an allen key.

Part#	Description
EZD33FWS	One (1) EZ-Path device - Series 33



Series 33 Extension Module

Increases Pathway Length for Thicker Walls

The extension module attaches to the end of a Series 33 Pathway increasing the effective length for thicker walls. A single extension can be mounted on one end to increase Pathway length by 6" (15.2 cm) to a total of 15.5" (39.4 cm). Extensions can be mounted at both ends to increase Pathway length by 12" (30.5 cm) to a total of 21" (53.4 cm). Extensions are designed to work with all other accessories.

Part#	Description
EZD33E	One (1) EZ-Path Series 33 extension module



Pathways & Accessories

Installation Options Single Series 33 Pathways

Standard Installation for Single EZ-Path Series 33 Pathway

Standard Sandwich Installation in Either Square or Round Openings

There are two options for standard new cabling installations using a single Series 33 Pathway in finished walls. These methods use wall plates secured to the pathway to sandwich the wall and lock the pathway into position.

Wall plates are available which permit installation in either nominal 3" (76.2 mm) x 3" (76.2 mm) square or 4" (102 mm) round openings. Full kits include pathway, wall plates, gaskets, set screws, allen key, and labels. Installations can also be made using individually purchased pathways and wall plate kits.



Part#	Description
EZDP33FWS	EZ-Path Series 33 kit {One pair (2) square wall plates and one (1) Series 33 pathway}
EZP133W	Wall plate kit - one pair (2) wall plates (Device must be ordered separately)
EZDP133CWK	EZ-Path Series 33 circular wall plate kit {One pair (2) circular wall plates and one (1) Series 33 pathway}
EZP133CW	One pair (2) circular wall plates (Device must be ordered separately)
EZD33FWS	EZ-Path Series 33 device (Pathway only)

Series 33 Kick-In Plate

Core Drilled Masonry or Concrete Openings with NO Fasteners

The EZ-Path Kick-In Plate (EZP133K) is designed for installation of a Series 33 Pathway into 4" (102 mm) core drilled openings. Installation is simple! Attach Plate to Pathway using included set screws and press plate/pathway assembly into opening until flush with surface. Built-in, self-locking fasteners securely wedge the assembly into the concrete. No fasteners or sealant required!

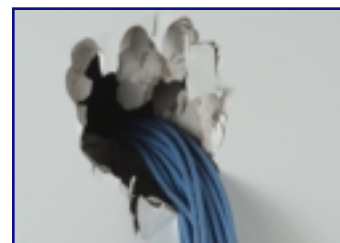


Part#	Description
EZDP133FK	EZ-Path Series 33 kit with kick in plate {One (1) Kick-in plate and one (1) Series 33 pathway}
EZP133K	One (1) Series 33 floor kick-in plate (Does not include pathway device)

EZ-Path Retrofit Plates

Install Pathways with Previously Installed Cables or Repair Oversized or Damaged Cable Openings

The EZ-Path Retrofit Plate is a multi-purpose split mounting plate designed to facilitate EZ-Path installations in retrofit applications (around previously installed cables) or in new or existing cabling applications where a large opening or opposing offset openings have been created in either gypsum board or masonry block wall applications.



Part#	Description
EZDP33WR	EZ-Path Retrofit plate kit- complete kit {One pair (2) retrofit plates and one (1) Series 33 pathway}
EZP133R	One pair (2) retrofit plates (Does not include pathway device)

Series 33 Conduit Attachment Plates

Install Series 33 Pathways into Existing Sleeves or Conduits

Series 33 Conduit Attachment Plates allow Series 33 Pathways to be installed within 4" (102 mm) sleeves or conduits. Split plate allows for installation in both new and existing cabling applications. Plate attaches to Pathway. Set screw clamps, then attach the plate to the exterior wall of the conduit. See Installation Instructions for additional sleeve requirements.

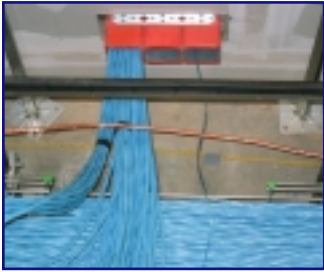


Part#	Description
EZDP133CAK	EZ-Path Conduit attachment plate kit- complete kit {One pair (2) conduit attachment plates and one (1) Series 33 pathway}
EZP133CA	One pair (2) conduit attachment plates (Does not include pathway device)

Installation Options for Multiple 33 Series Pathways

Series 33 Multi-Gang Kits & Components

Provide Additional Capacity, Cable Organization, Future Growth



Designed for new cabling installations, gang plates allow Series 33 Pathways to be grouped for additional capacity. 2, 3, 4, and 7 gang plates are available.

2 and 3 gang plates are designed for standard installation into finished walls. 4 and 7 gang plates are designed to span standard 16" or 24" stud spacing and can be installed into finished walls or attached to wall studs prior to installation of wall board.

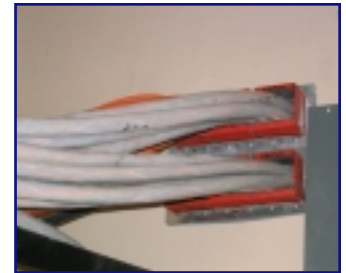
All configurations are available as complete kits (with required pathways, wall plates, gaskets, labels, etc.) or may be configured from separate components.



NOTE: * WHEN INSTALLING PATHWAYS INTO WALL DURING CONSTRUCTION, SUITABLE FASTENERS FOR ATTACHMENT OF PLATES TO STUDS MUST BE USED.



Part#	Description
EZDP233GK	EZ-Path Series 33 double kit {One pair (2) double wall plates and two (2) Series 33 pathways}
EZP233W	Double wall plate kit - one pair (2) double wall plates (Device must be ordered separately)
EZDP333GK	EZ-Path Series 33 triple kit {One pair (2) triple wall plates and three (3) Series 33 pathways}
EZP333W	Triple wall plate kit - one pair (2) triple wall plates (Device must be ordered separately)
EZDP433GK	EZ-Path Series 33 four gang kit {One pair (2) four gang wall plates and four (4) Series 33 pathways}
EZP433W	Four gang mounting plate kit - one pair (2) four gang wall plates (Device must be ordered separately)
EZDP733GK	EZ-Path Series 33 seven gang kit {One pair (2) seven gang wall plates and seven (7) Series 33 pathways}
EZP733W	Seven gang mounting plate kit - one pair (2) seven gang wall plates (Device must be ordered separately)
EZD33FWS	EZ-Path Series 33 device (Pathway only)



Additional Accessories for Series 33 Pathways

Series 33 Positioning Clamps

Position & Secure Pathway for Caulk or Mortar Backfilling

Positioning clamps are used to position and secure pathways in applications where standard wall plates will not be used and the device will be either backfilled or caulked into an opening. Can be used for both new or existing cable installations.



Part#	Description
EZP133PC	Positioning clamp kit - one pair (2) Series 33 positioning clamps (Device must be ordered separately)

Series 33 Radius Control Modules

Provide Cable Support & Eliminate Damaging Bends

EZ-Path Radius Control Modules (RCM) snap to the ends of Series 33 Pathways and provide a 1" (25.4 mm) minimum bend radius as recommended for both fiber optic, Cat 5e and Cat 6e Cables. Molded using UL94 V-O flame retardant, impact resistant polycarbonate, RCMs support cable bundles at 100% Pathway-rated loading. Insertion slots are provided for support ties (not included).



Part#	Description
RCM33	One pair (2) series 33 radius control modules

Related Firestop Component Products

SpecSeal® Firestop Pillows

Easily Seal Large Openings Around Pathways

SpecSeal® Firestop Pillows are a great choice for sealing around Pathways installed in larger openings. Pillows can be installed from one side only making them ideal for installations where access is limited. In addition, no fasteners and no mesh are typically required. Pillows can easily be removed and reinstalled if changes in penetrants are required.

NOTE: Pillows must not be used to support or affix penetrants. Pathways must be rigidly fixed within the opening using strut or similar approved methods.

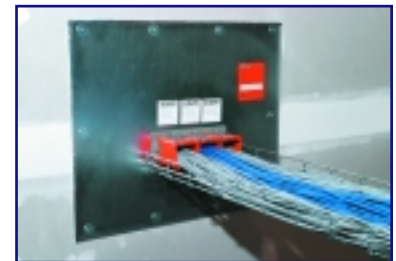


Part#	Description
SSB14	Firestop pillow 1" x 4" x 9" (25 x 102 x 229 mm)
SSB24	Firestop pillow 2" x 4" x 9" (51 x 102 x 229 mm)
SSB26	Firestop pillow 2" x 6" x 9" (51 x 152 x 229 mm)
SSB36	Firestop pillow 3" x 6" x 9" (76 x 152 x 229 mm)

SpecSeal® Intumescent Composite Sheet

Lightweight Panels Provide Heavy Weight Fire Protection!

These intumescent panels are used to close down larger openings around penetrants and can be used for the same purpose when installing EZ-Path® devices into larger openings. The panel is a composite consisting of galvanized sheet metal faced with an intumescent layer, overlaid with a foil-faced, steel reinforcing mesh. The panel is easily cut using tin snips, suitable shears or a jig saw. The panel is attached to the wall or floor surface using suitable steel fasteners (not included). See UL® Classified systems, Product Data Sheet, and Installation Instructions for additional information.



EXPECTED AVAILABILITY - FEB, 2005

Part#	Description
CS1628	16" x 28" intumescent composite sheet
CS2436	24" x 36" intumescent composite sheet
CS2852	28" x 52" intumescent composite sheet
CS3636	36" x 36" intumescent composite sheet
CS3641	36" x 41" intumescent composite sheet



Visit our website for complete product and ordering information
www.stifirestop.com



Specified Technologies, Inc.
THE FIRESTOP AUTHORITY

200 Evans Way • Somerville, NJ 08876 • 800-992-1180

©2005 Specified Technologies Inc.

EZPath® is a Trademark of Specified Technologies Inc. U.S. Patent: 6,72,481